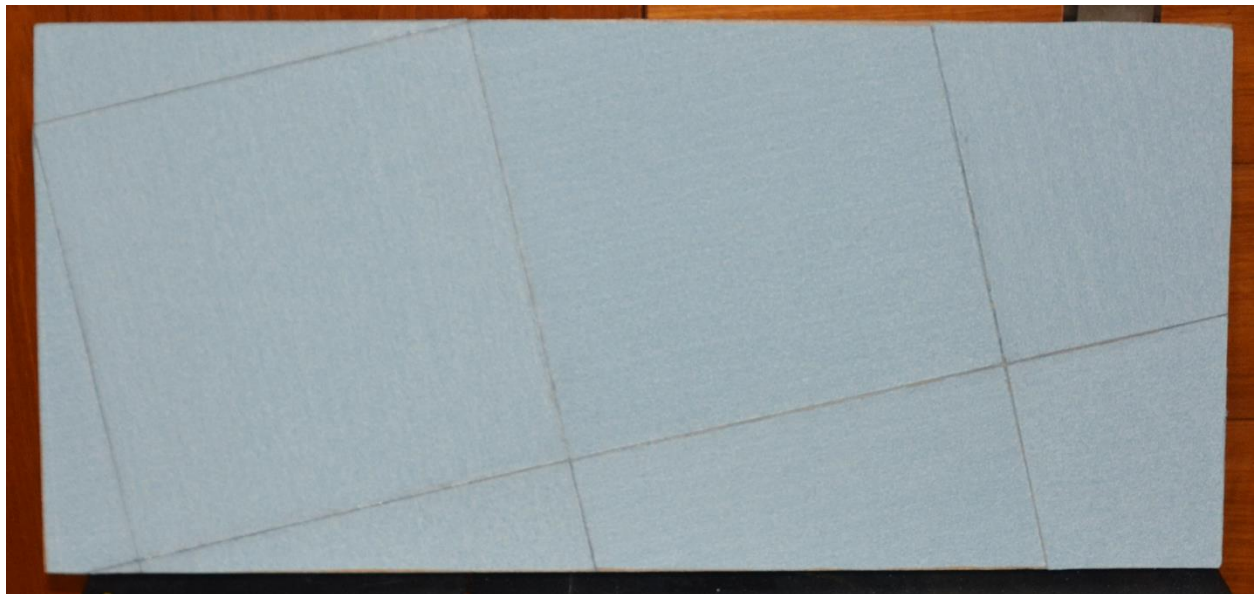


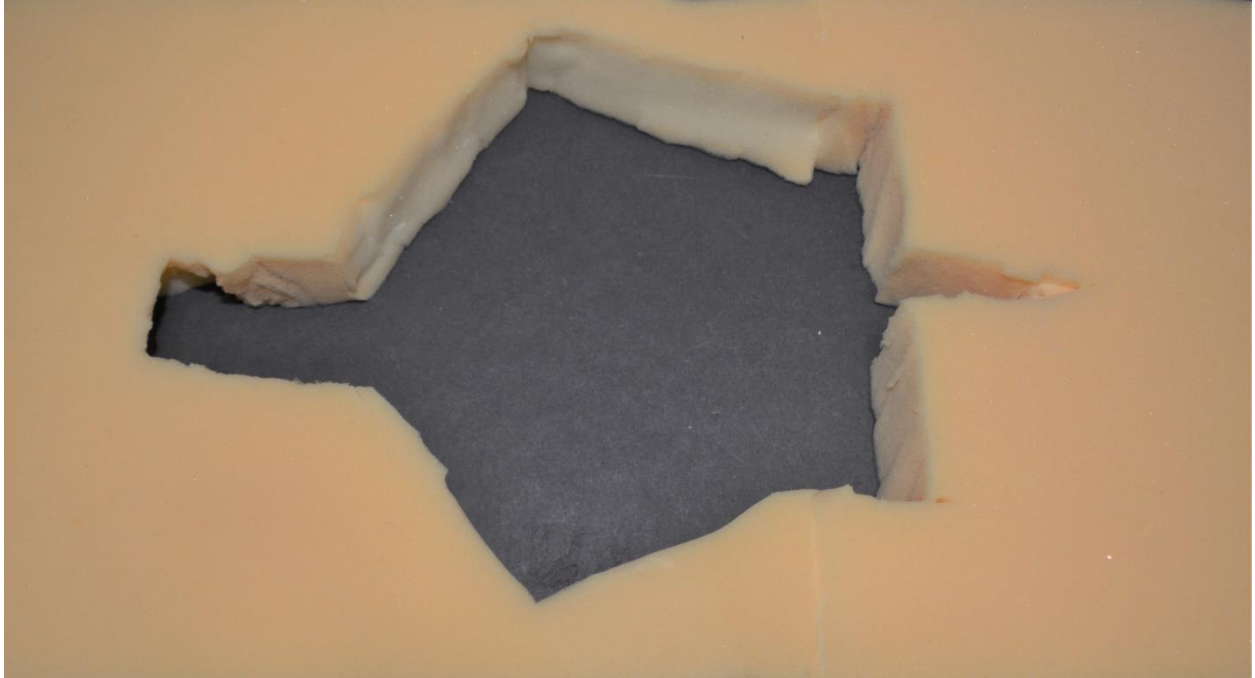
Custom-built display cases are scratch-built for each of my models by a truly superb cabinet maker, Mark Whittaker. The display case base can be finished with “tarmac”, grass, or any other material. Tarmac is created using 100-grade sandpaper glued on the top surface of the base, scribed to simulate concrete expansion joints, which are darkened with a graphite pencil, then slightly “weathered”; in the case of RR Merlin engine-driven aircraft, oil stains are added judiciously; as the old saying goes about RR Merlin engines, “if it does not leak oil, there is something wrong with it”. Grass is, depending on the scale of the model, Woodland Scenics, in various shades and coarseness. Other materials can be rough unpaved airstrip “stones/sand/metal meshing” (as in post D-Day early advanced airstrips in Normandie or Calvados), sand for North Africa and PTO airfields, or aircraft carrier decking, including balsa strips for Royal Navy escort carriers. Snow is replicated with different shades of aquarium sand. For seaplanes and flying boats, properly hued acrylics mimic water, including “wave” action.

These cases duplicate as “inner shipping crates”; the model is “suspended” on 2” memory foam, hollowed out so none of the fragile parts (landing gear and their doors, drop tanks, lowered flaps, armament, ...) are exposed to pressure. A second piece of memory foam, cut to the correct thickness and partially hollowed out for vertical tail fins, radio masts and wiring, RDFs, ... , is used to very slightly “compress” the model securely inside the display case. The display case cover is secured to the base with industrial “Saran” wrap. The case comes with felt pads on the four corners, 1” from the edges.

Each case is then enclosed (as in screwed in place from the bottom without the screws piercing the base cover surface) in a sturdy 5/8” MDF outer shipping crate, also custom-built for each display case, as these display cases are individually sized for each model.



CF-104 “tarmac”



Above two photographs: working foam jig for 1:32 CL-13 (F-86F); a full size similar bottom foam will be used for shipping purposes, from my workshop in Montreal to the recipient in Vancouver



Beach scene for Pappy Boyington's 1:48 Tamiya F4U-1A Corsair



CL-116A in its display case



Escort carrier HMS Arbiter balsa decking, with slightly angled catapult track



Detail of Boyington Corsair display case